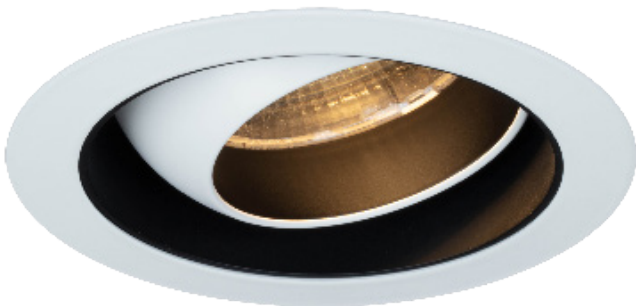
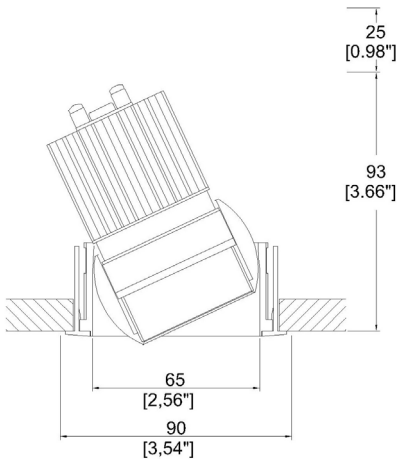


Oculus Accent Trim



Ø65mm (2.56") adjustable downlight with eyeball mechanism, offering 30° adjustment in all directions. Available with a standard trim kit or 3 flush trim options, depending on ceiling type and finish.



Oculus with Trim Kit TR1 ⁽¹⁾
Cut-out Ø82mm (Ø3,22").
Required depth height +25mm.

TM65.2 8 kgCO2e

TM66 2.5 CEAM

**BUILD
BACK
BETTER**
GOLD
GREEN

LED Source	LED51/3	LED51/3	LED51/3	LED51/3
CCT	3000K	3000K	3000K	3000K
Drive Current	350mA	350mA	350mA	350mA
Power inc Driver	14.8W	14.8W	14.8W	14.8W
Beam Angle	SP (12°)	MF (19°)	FL (30°)	WFL (56°)
Delivered Lumens	908	976	1095	1134
Delivered Intensisty cd	11569	6764	3934	1502
Delivered Lumens per circuit watt	61	66	74	76
Forward Volt	36V	36V	36V	36V
CRI	≥90 CRI	≥90 CRI	≥90 CRI	≥90 CRI



Apply these factors to 3000K for lumen output of other CCTs: 2200K x 0.65 / 2400K x 0.69 / 2700K x 0.98 / 4000K x 1.02.



Project Ref: _____

Location Ref: _____

Fixture Order Code:	OC010	-		-		-		-		-		-	
Fixture	OC010	OculusAccent for LED											
Installation	TR1 ⁽¹⁾	Trim for Existing Ceilings (ceiling thickness 5-25mm)											
Oculus Finish	WH02 BK02 RAL ABR1 ABZ1 PCH1 PNK1 PBR1	Textured Matt White RAL 9010 Textured Matt Black RAL 9005 Custom RAL Colour* Antique Brass Antique Bronze Polished Chrome Polished Nickel Polished Brass											
Internal Finish	WH02 BK02 RAL* ABR1 ABZ1	Textured Matt White RAL 9010 Textured Matt Black RAL 9005 Custom RAL Colour* Antique Brass Antique Bronze											
Trim Finish	WH02 BK02 RAL* ABR1 ABZ1 PCH1 PNK1 PBR1	Textured Matt White RAL 9010 Textured Matt Black RAL 9005 Custom RAL Colour* Antique Brass Antique Bronze Polished Chrome Polished Nickel Polished Brass											
IP Rating	54 65	IP54 IP65											
Fire Rating	0 FR ⁽²⁾	No Fire Rating Fire Rated											



(1) For any ceiling thickness or construction type not shown please contact Lucent
(2) Tested and approved to EN 1363-1:2020 and EN 1365-2:2014 for 60 minutes Fire Rating.

Module Order Code:	LED51/3	-		-	
LED	LED51/3	LED50 ONE GEN 3			
CCT	22 ⁽³⁾ 24 ⁽³⁾ 27 30 40 ⁽³⁾	90 CRI 2200K 90 CRI 2400K 90 CRI 2700K 90 CRI 3000K 90 CRI 4000K			
Beam	SP MF FL WFL	Spot Medium Flood Flood Wide Flood			

(3) contact Lucent for availability

Driver Options:	
Protocol	
S	Non-Dim
A	Analogue (0-10v)
P	Phase
D	DALI
B	Bluetooth**

Emergency Options:	
Emergency	
E	Maintained 3hr Emergency
ED	Maintained 3hr DALI Self Test
ES	Maintained 3hr Self Test



Finish selection



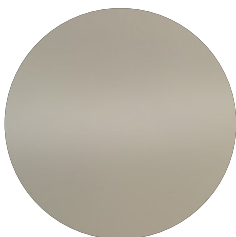
Antique Brass



Antique Bronze



Polished Brass



Polished Nickel



Polished Chrome

Accessories



Honeycomb Louvre



Diffusing Lens



Frosted Lens



Heavy Spread Lens



Linear Spread Lens

Accessories Order Code:

- Louvre/Lens
- LL45

LLDF

LLFR

LLLS

LLHS
- Honeycomb Louvre

Diffusing Lens

Frosted Lens

Linear Spread Lens

Heavy Spread Lens



Technical Details

*Custom RAL code must be specified. Custom RAL colours can increase prices and lead times

Dimming. Whilst Lucent can offer the majority of its luminaires with various dimming options, it remains the responsibility of the specifier/installer to check and ensure compatibility of any control equipment used. Additional cabling may be required depending on the dimming protocol specified.

**Bluetooth (wireless) is the communication method. The exact dimming protocol must be confirmed to allow the selection of suitable drivers or bluetooth devices.

^ Depth indicated is the minimum recess depth for the luminaire with a remote mounted LED driver. Installing a driver through either the luminaire cut-out or installation kit may require additional recess depth, please refer to the relevant luminaire installation instructions for further details. Data correct at time of publishing

First Fix Requirement. Luminaire comprised of fixture body with ceiling trim and installation kit, which is to be fitted into the ceiling once finished. Ensure correct alignment of the installation kit before final assembly (see luminaire installation instructions for details)

IP Rating. Tested from underside of the ceiling

Note that the picture of the finishes provided is for illustrative purposes only. The finishes may vary in colour, texture and appearance. Contact Lucent lighting Ltd for more information.

It is the policy of Lucent Lighting to continually review and improve its products and therefore reserve the right to change any details of product or withdraw specifications without prior notice.

Luminaires designed to comply with EN60598 and all other standards.

This specification sheet supersedes all previous versions.

All intellectual property rights pertaining to the product described above and to this document are owned by or licensed to Lucent Lighting Ltd.

We reserve the right to take whatever action is necessary to protect those intellectual property rights.